

Annual Report

2023-2024

PRESIDENT AND CEO REPORT



A momentous year and a new home

The last financial year has been one of great change and achievement. On 19 May, in the presence of Deputy Premier Susan Close and Her Excellency, Governor Frances Adamson, we officially opened our brand new, state-of-the-art animal care campus at O'Halloran Hill. In doing so, we united all aspects of our organisation in one location.

We are indebted to the generous and kind support that the South Australian community showed us as we rallied for funds to complete construction. We also thank Cook Build, Ashley Halliday Architects and numerous sub-contractors who worked to deliver on time and budget, with many donating goods and services.

For the animals... and the people who care for them

Our new home and facilities have presented an excellent opportunity to review and continue to elevate how we look after the animals in our care. We are taking advantage of our best-practice campus to deliver best-practice animal care. Our mission is to rehabilitate and rehome as many animals as possible as quickly as possible, thus reducing their shelter stay, and we continue to evolve our animal care model to do this.

In providing optimum care for the animals we are custodians of, we must also take care of our people. Our new, modern workplace has certainly boosted positivity. Last year we made good strides in reviewing our existing practices and implementing a new strategy on how we manage safety throughout the organisation, including how we take a proactive approach to improving mental health and wellbeing.

We look forward to continuing and building on this in the year to come, in line with the values that drive what we do: big heart; be courageous; lead the way and a positive outlook.

Additional funds to enforce the Animal Welfare Act

In June 2024 the State Government announced increased funding for our Inspectorate. This was a welcome and much needed commitment which will see us receive a total of \$22.6m over the next four years. The funds will see our Inspectorate operations 87% funded for domestic animals and 50% funded for livestock. We continue working to improve these amounts so that the government fully fund the inspectorate function which is performed on behalf of the government and not cross subsidised by community donations.

The funding is in response to an RSPCA SA report on the current status that sees just seven Inspectors investigate more than 4500 cruelty reports each year, across the entire state. RSPCA SA Inspectors have the highest case load in the country - and demand is projected to increase.

We thank the South Australian Government for recognising RSPCA's role in enforcing the Animal Welfare Act. We are also grateful to the generous donors who assist in bridging the Inspectorate funding gap, thereby enabling the care, rehabilitation and rehoming of thousands of animals each year.

MISSION

To prevent cruelty to animals by actively promoting their care and protection.

VISION

A compassionate society free of animal cruelty and suffering.



Advocacy and action in animal welfare

Our commitment to prevent cruelty through advocacy continues, and we celebrated some historic wins in the past year.

For the first time in a generation, the Animal Welfare Act (SA) is under review. Under the current AWA draft, Inspectors will no longer have to wait for an animal to suffer harm before having the power to intervene. Duty of care definitions have also been tightened, removing an often-used loophole by cruelty perpetrators. Other proposed changes will see animals seized by our Inspectors and in our protective custody released to us sooner - meaning we can rehome them sooner.

More shocking incidents within SA's greyhound racing industry prompted a state government Inquiry into the industry's governance. The final report confirmed an entrenched culture of tolerance for cruel treatment of greyhounds and the failure of self-regulation. Monitoring progress on the report's recommendations and continuing to advocate in this space are key priorities.

In positive news, bow hunting is now illegal in South Australia, and we look forward to the Residential Tenancies Act amendments giving people with pets a better chance of securing rental accommodation. Nationally, the federal government has set an end date - 1 May 2028 - for the cruel export of live sheep by sea.

An important review of the Dog & Cat Management Act has begun, and we provided the second of two submissions in September 2024.

The year ahead

We recognise the constant and continuing need for our services and assistance and have begun scoping a spectrum of community outreach services. These will focus on reducing the number of homeless and unwanted animals, helping people to become more skilled and responsible pet owners and keeping people and their pets together.

Work also continues on building our capacity in wildlife and we hope to open the doors to our wildlife veterinary service in the coming year.

We look forward to being of service to South Australia and continuing our commitment to all creatures - great and small.

On behalf of the Board, the people and, of course, the animals of RSPCA, we would like to extend our sincerest gratitude for your commitment and kindness.

Marcus Gehrig
Chief Executive Officer

Rob DiMonte
President

OUR IMPACT



INSPECTORATE

4650

Cruelty reports received by our inspectors



ANIMAL RESCUE

1580

Call outs responded to by our rescue officers



ANIMAL CARE

5893

Animals came through our doors for care



ADOPTIONS

3284

Animals found their forever homes



PROSECUTION

41

Prosecution cases finalised by our legal team



ADVOCACY

We continued to advocate for improved animal welfare laws and policies, with significant progress across

6 different issues



VOLUNTEERS

1020

Volunteers supported our operations



56%
Adopted

12%
Reclaimed

13%
Euthanised

2%
Unassisted death

11%
Transferred to a partner organisation

6%
In care (Animals that remained in our care after FY24)

5893
TOTAL ANIMALS



(All costs once animals come into our care including veterinary, behavioural, rehabilitation, shelter and foster care)

36.24%
Animal Operations

2.88%
Rescue Team Operations

(Responding to community calls for rescue assistance, ambulance transport)

32.81%
Inspectorate Team & Legal including prosecutions

(Responding to and investigating cruelty complaints, pursuing prosecutions under the Animal Welfare Act)

3.21%
Advocacy and Education

(Influencing change to promote best-practice care)

24.86%
Operations, Facilities and Administration

(Costs to keep the organisation running, in addition to promoting adoptions, recruiting volunteers, and foster carer support)

HOW WE ALLOCATE FUNDS

9.2%
Government Funding

1.3%
Other Income

6.1%
Investment income including sale of assets

7.9%
Council Income

75.5%
Community Income

WHERE OUR FUNDING COMES FROM



HIGHLIGHTS

A historic year for RSPCA SA



After more than 40 years, we closed the gates of our Lonsdale shelter for the last time in May and moved into our new home in Glenthorne National Park, O'Halloran Hill. We celebrated the milestone occasion with a ribbon cutting ceremony at the campus attended by Her Excellency the Honourable Frances Adamson AC and Deputy Premier and Minister for Environment and Water Susan Close MP (pictured above).

In addition to modern and improved animal accommodation, the state-of-the-art campus houses the Brad Ward Veterinary Clinic (named after RSPCA SA's first-ever vet) and South Australia's first dedicated wildlife hospital, which will open in the coming months. The culmination of the seven-year quest to find our new headquarters signified the start of a new era for animal welfare in South Australia. Our home on the hill is much more than just a place to house animals, it's the state's first integrated animal care campus and a legacy for future generations.



Kingsley Newman was the Chairman of RSPCA SA for six years and played an instrumental role in building our Lonsdale shelter more than 40 years ago. He was present when the facility first opened, and we were delighted that he could be there to bid farewell on the last day. Pictured left, holding an old photograph of himself at the shelter.

Key FY24 achievements



To help raise funds for our new home prior to our big move, we delivered a five-day donation drive and surpassed our \$500,000 target well ahead of schedule thanks to a generous and unexpected gift from big-hearted philanthropist, Carole Stone (pictured above with RSPCA SA CEO Marcus Gehrig).



We supported the national campaign urging the federal government to legislate a date to end live sheep export from Australia. This inhumane trade is now legislated to end on 1 May 2028.



We successfully advocated for a ban on bow hunting, which will come into effect in December 2024. Initially the ban only protected animals on public land, but additional lobbying saw the ban of this cruel recreational activity extended to private properties.



As South Australia's only animal welfare charity entrusted to investigate animal cruelty under the *Animal Welfare Act*, the opportunity for RSPCA SA to contribute to the government's review of the Act is one we pursued with energy and clear goals. Slated changes to the Act include tougher penalties for animal cruelty and a duty of care provision to help prevent harm.



Building on the success of our op shops network, we opened a new store in Mawson Lakes, bringing our total number of op shops to 16.



The state government committed to increase their funding for our Inspectorate to \$22.6m over the next four years, allowing us to be better resourced to respond to increasing animal cruelty reports and complexity of cases.

Pictured right: RSPCA SA's Inspectorate & Legal Team with CEO Marcus Gehrig.



2024-2029

STRATEGIC PLAN

Strategic Pillar 1:

Protect, Prevent & Influence



How we will achieve:

- 1.1 We will develop programs focused on community engagement to prevent cruelty and neglect
- 1.2 We will establish community outreach programs to improve responsible animal ownership
- 1.3 We will be the leading voice of influence on Animal Welfare throughout South Australia

What our impact will be:

- 1.1 Animal Welfare is improved throughout SA
- 1.2 The number of domestic animals requiring RSPCA care is reduced
- 1.3 Improved legal and regulatory protection for animals

Strategic Pillar 2:

Empower & Engage our Workforce



How we will achieve:

- 2.1 We will build the best workforce that is committed to our purpose and values
- 2.2 Our culture will support a safe and healthy environment so that our people can do great work
- 2.3 We will recognise our staff and volunteers' commitment to our purpose

What our impact will be:

- 2.1 We are seen as an employer of choice
- 2.2 Our workforce is healthy and safe
- 2.3 Our workforce is valued and appreciated

Strategic Pillar 3:

Strengthen our Customer Engagement



How we will achieve:

- 3.1 We will focus and respond to our customers' expectations
- 3.2 We will make it easy for customers to engage with us
- 3.3 We will continue to build our market presence as leaders in Animal Welfare

What our impact will be:

- 3.1 Our customers become our greatest promoters
- 3.2 Our customers are loyal
- 3.3 We are trusted by the South Australian public

Our 2024-29 Strategic Plan aims to unify our focus, providing clear direction while remaining adaptable to our ever-changing environment. It is a blueprint for our future and a statement of our collective intent.



Strategic Pillar 4:

**Grow,
Sustain,
Mature**



How we will achieve:

- 4.1 We will drive opportunities to build financial sustainability
- 4.2 We will focus our activities on full cost recovery
- 4.3 We will collaborate nationally to align our organisation and build synergy

What our impact will be:

- 4.1 Our reserves grow to the benefit of our community
- 4.2 Our programs are funded to meet our needs
- 4.3 Our capacity and capabilities grow

Strategic Pillar 5:

**Best
Practice
Animal Care**



How we will achieve:

- 5.1 Our animal care models are considered best practice
- 5.2 We will leverage technology to advance our business
- 5.3 We will continuously improve our business processes
- 5.4 We leverage our transition to Glenthorne and become a Wildlife organisation

What our impact will be:

- 5.1 Animals stay for shorter periods and shelter welfare is improved
- 5.2 Our technology enables our work, and our innovations improve animal outcomes
- 5.3 We challenge our status quo
- 5.4 We celebrate our new home

Our Success Factors

1. A consistent focus on improving animal welfare in SA
2. Capability to influence government and other animal welfare stakeholders
3. Achieving a high level of staff and volunteer performance, satisfaction, and retention
4. Increases in revenue generated from customer and donor satisfaction and retention
5. Continued positive promotion of RSPCA
6. More animals saved

OUR BOARD



Marcus Gehrig, Chief Executive Officer —————



Marcus's broad-ranging business career includes expertise in commercial and business development, strategic planning, marketing and brand development. He has spent more than a decade in executive roles

across the corporate and not-for-profit sectors.

Mr Gehrig's long held passion to give a voice to those who need it, paired with his experience as an RSPCA South Australia board director, has given him strong insight into how the organisation works and makes him well-equipped to lead the organisation at this pivotal point in time.

Rob DiMonte, President —————



Rob is a chartered accountant and professional company director. He has held many board and advisory roles over the past 35 years and is passionate about improving the social and economic wellbeing of South Australians.

Ron Baker, Veterinary Science, Business & Leadership —



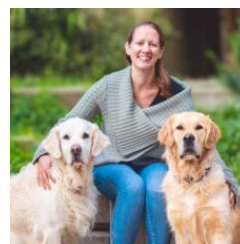
Ron Baker is a veterinarian with extensive experience over the last 30 years owning and managing veterinary practices. From 2019-2022 Ron was General Manager of the Specialist and Emergency Hospital Division at Greencross. In 2022 he stepped back from this role to begin his own consultancy as a business and leadership coach.

Professor Chris Daniels, Wildlife —————



As CEO of the International Koala Centre of Excellence and Chief Strategic Advisor to Cleland Wildlife Park, Chris brings a wealth of experience to the board. Chris has a passion for wildlife conservation and connecting with nature.

Sheenagh Edwards, Accounting —————



Sheenagh is a chartered accountant and audit partner with more than 20 years' experience and has been involved in the audit of larger not-for-profit organisations throughout her career, both in the UK and Australia.



Julie George, Marketing



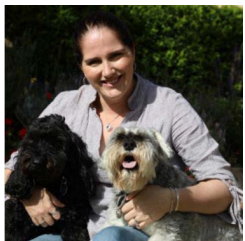
Julie has over 25 years' experience in corporate and agency marketing roles having run branding and marketing agency, Algo Mas, before it was acquired by Them Advertising in 2023. She has previous and current board and committee experience in the local government, arts and property sectors. Julie is currently the Strategy and Growth Director at Them.

Paul Hutchinson, Finance



Paul's career has spanned more than 30 years in the financial services sector in Australia, New Zealand and the broader international marketplace. He currently works with the University of Adelaide, where he is responsible for major organisational projects. Paul is also a professional company director, including governance roles in publicly listed, statutory and not-for-profit sectors.

Kate Gray, Commercial



Kate has a Bachelor of Economics and a Bachelor of Commerce from the University of Adelaide, has worked in a range of marketing and analyst roles in FMCG, retail and property and is now a business owner.

Leanna Read, Science



Leanna brings broad-ranging company executive, board and investment experience, particularly in biotechnology. She is chair or a board member of several companies and innovation committees, and a past Chief Scientist for South Australia. Leanna is passionate about animal welfare in the agricultural sector and broader community.

Susan Hazel, Veterinary



Susan is a veterinarian by training and an academic at the University of Adelaide, School of Animal & Veterinary Sciences, where she teaches animal behaviour, animal welfare and ethics. She is a member of multiple animal boards, committees and associations and her research interests centre on human-animal interactions with a goal to improve both animal and human welfare.

Stephen Voss, Legal



Stephen is a lawyer and partner at national law firm Thomson Geer and acts for a number of national and international institutional corporations.

Financial summary

Statement of profit or loss and other comprehensive income

For the year ended 30 June 2024

		2024 \$'000	2023 \$'000
Costs			
<i>Mission</i>	Inspectorate & Legal	4,035	3,216
	Rescue	355	309
	Animal Operations	4,457	5,767
	Advocacy and Education	395	225
	Sub-Total Mission Costs	9,242	9,517
<i>Overheads</i>	Admin & Depreciation	3,056	2,452
	Total Mission Costs to be Funded	12,298	11,969
Net Income			
<i>Bequests</i>		3,574	3,759
<i>Animal Operations</i>	Adoptions, Boarding, Council	2,083	3,179
<i>Government</i>	Inspectorate Funding	1,602	1,529
<i>Investments</i>	Incl Gains & Losses	840	3,125
<i>Commercial</i>	Op Shops, Dog training, Retail	437	304
<i>Fundraising</i>		1,143	1,682
	Total Net Income	9,679	13,578
Surplus / (Shortfall)		(2,618)	1,609
<i>Capital Campaign</i>		1,249	1,307
<i>Revaluation Adjustments</i>		454	328
	Total Comprehensive Income	(916)	3,244

Statement of Financial Position

For the year ended 30 June 2024

		2024 \$'000	2023 \$'000
Assets			
	Current Assets	2,633	14,233
	Non-current assets	41,784	25,003
	Total assets	44,417	39,236
Liabilities			
	Current Liabilities	3,453	4,161
	Non-current liabilities	11,116	4,311
	Total Liabilities	14,569	8,472
	Net Assets	29,848	30,764

OUR PEOPLE



Major National
Partner &
Official National
Nutrition Partner



National Partners



State Partner



For all creatures, great and small
Since 1875

Stay up-to-date with the latest animal
welfare news by signing up to our
e-newsletter at rspcasa.org.au

Follow us: [f](#) [@](#) [in](#)

